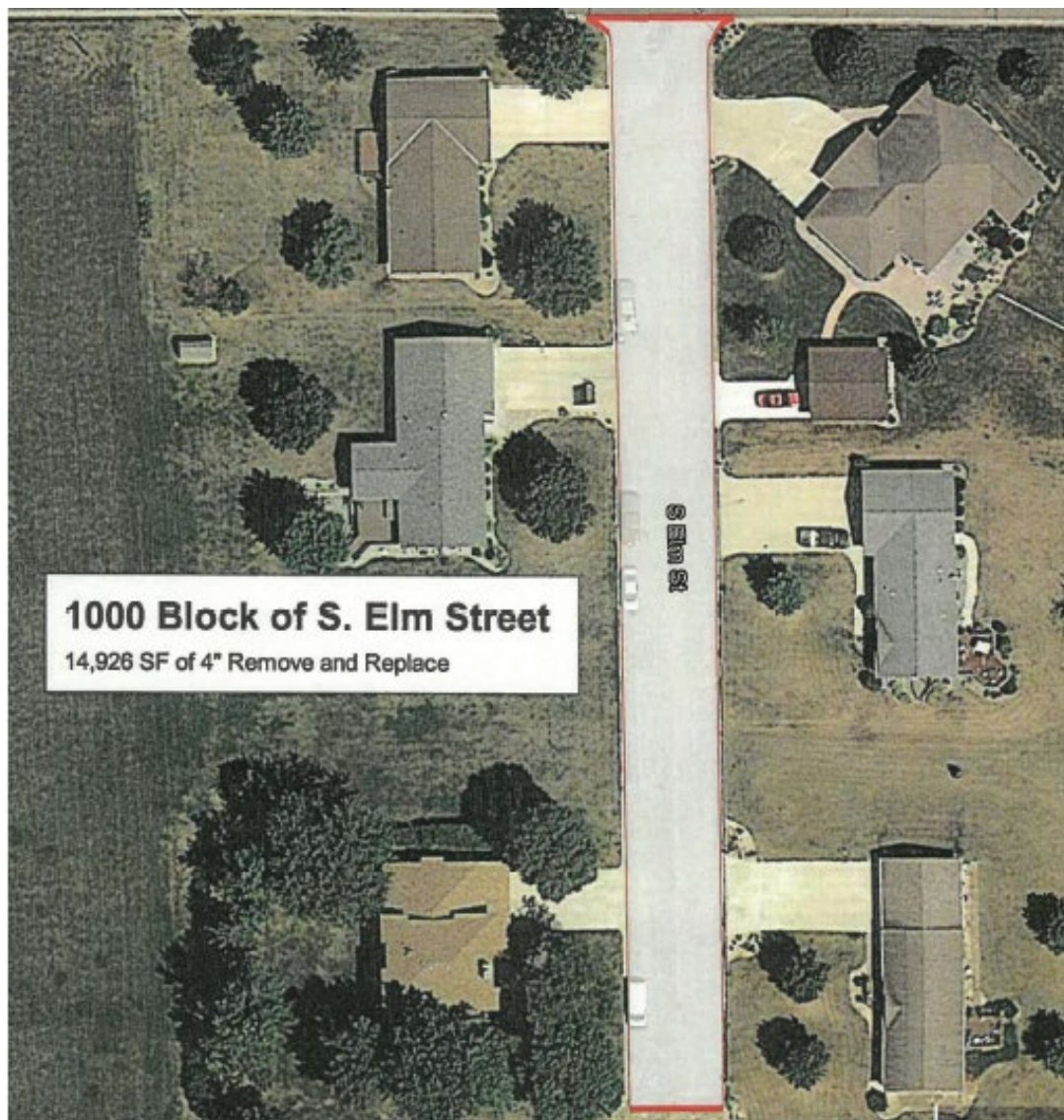


**2020 STREET MAINTENANCE PROJECT**  
**BID SPECIFICATION SHEET**

**Site A**

Location is 1000 block of Elm St. in Lamberton (approx. 15,000 sq ft.)

- Contractor will remove old asphalt, apply fabric & soil correction and install new asphalt.
- Remove and replace 4" asphalt
- 8" Class 5 soil correction with geotextile fabric



## **Site B**

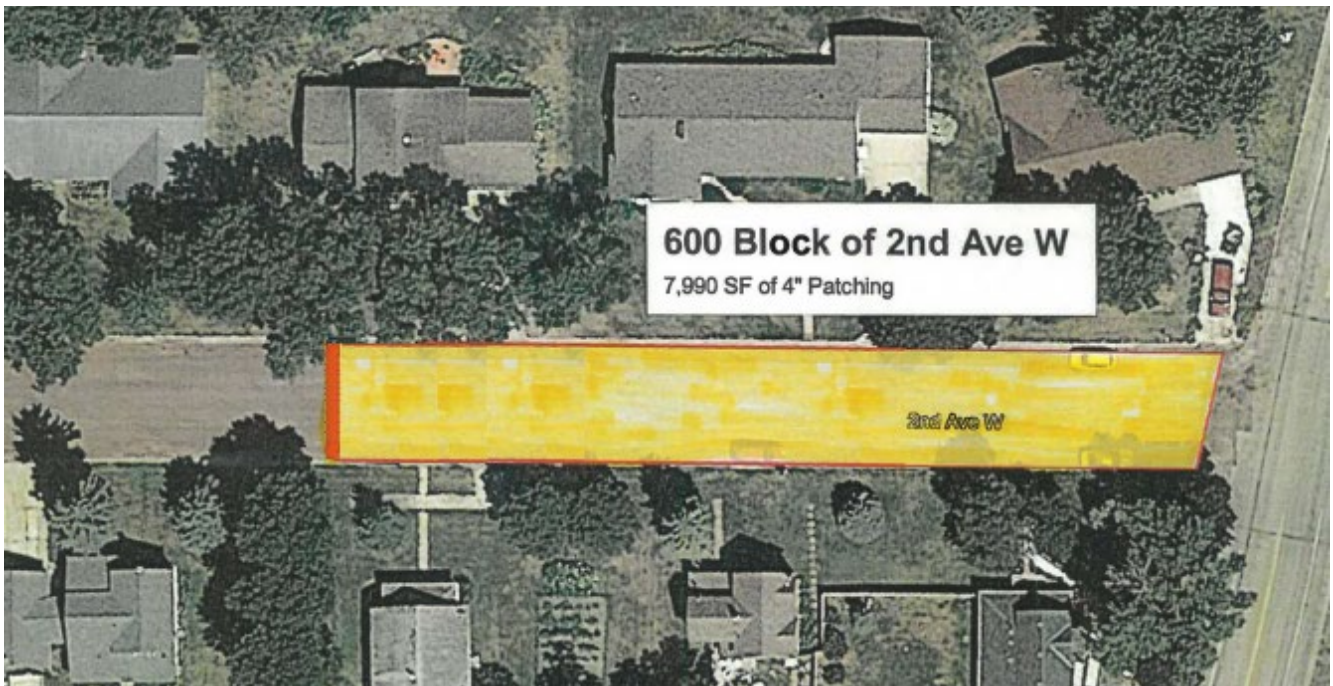
Location is 600 and 700 block of 2nd Ave. in Lambertton (approx. 8,000 sq ft and 8,500 sq ft)

### 600 Block

- Contractor will remove old asphalt, apply fabric & soil correction and install new asphalt.
- Remove and replace 4" asphalt
- 8" Class 5 soil correction with geotextile fabric

### 700 Block

- Contractor will remove old asphalt and install new asphalt.
- Remove and replace 4" asphalt



## Site C

Location is scattered all over town patches marked by white paint marks. (approx. 54,800 sq ft)

- Contractor will remove old asphalt and apply patches to designated areas.
- Remove existing surface and apply 3" asphalt patch

